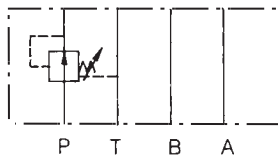


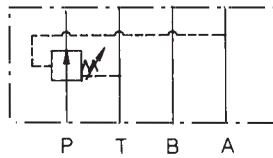
SPECIFICATIONS

Max. operating pressure	207 BAR (3000 PSI)
Max. flow capacity	35 LPM (9.3 GPM)

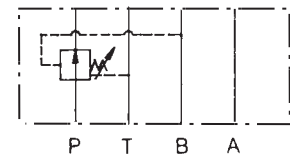
SYMBOLS



MPR-02P



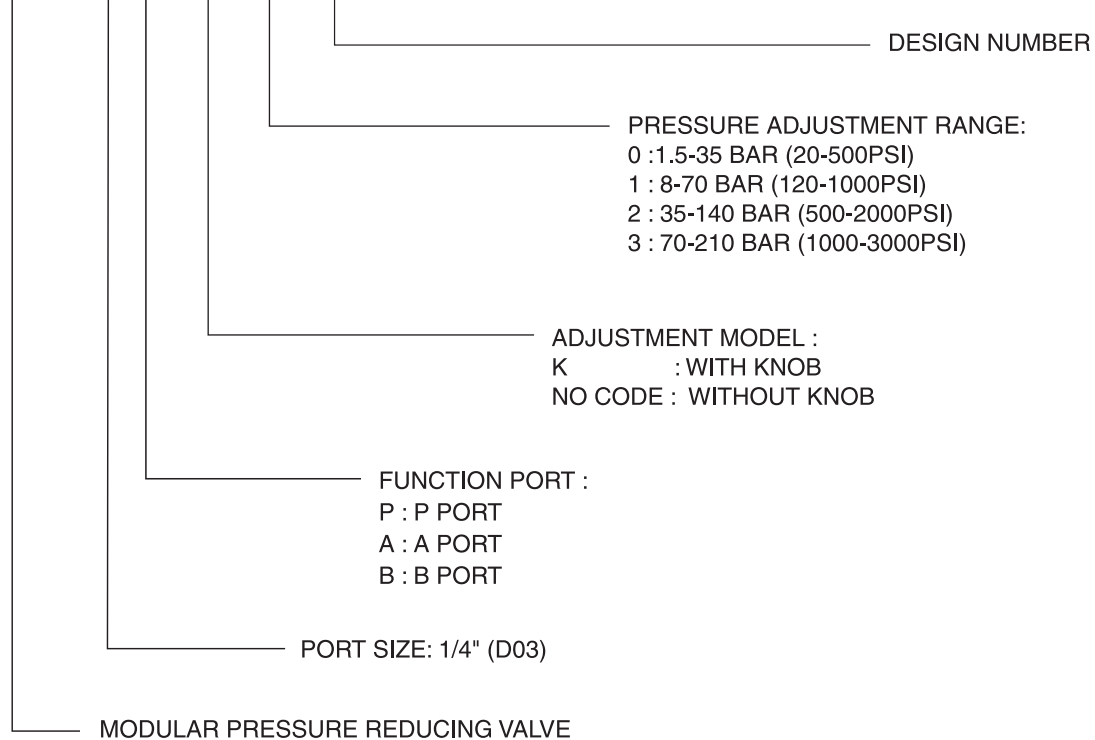
MPR-02A



MPR-02B

HOW TO ORDER

MPR-02P-K-1-40



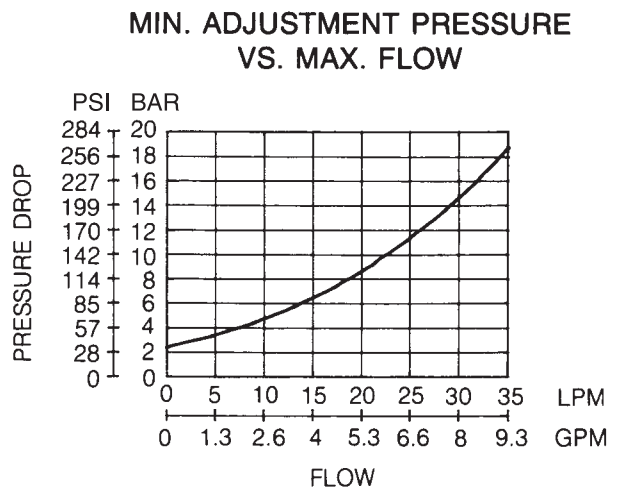
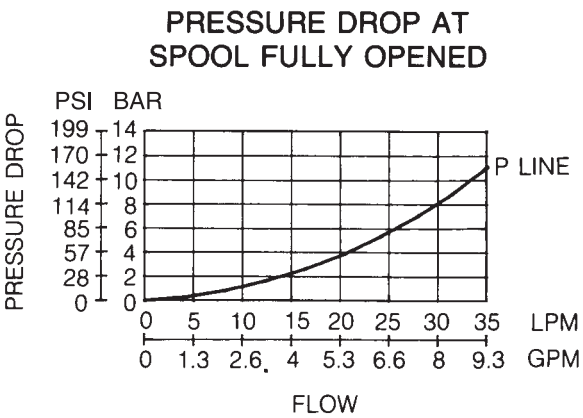
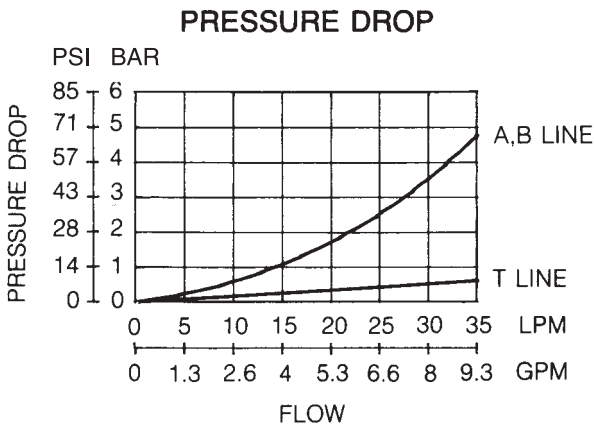
MPR-02 SERIES

PERFORMANCE CURVES

TEST CONDITIONS

Viscosity: 35 cSt (175 SSU)

Temperature: 50°C (122° F)



INSTALLATION DIMENSIONS

UNIT: mm(inch)
 WEIGHT: 1.2 kgs(2.65 lbs)
 Mounting Surface: ISO 4401-AB-03-4-A

MPR - 02 A/B/P - ※ - ※ - 40

