

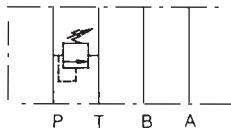
# MODULAR RELIEF VALVE MRF-03 SERIES



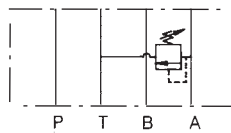
## SPECIFICATIONS

Max. operating pressure	207 BAR (3000 PSI)
Max. flow capacity	70 LPM (20 GPM)

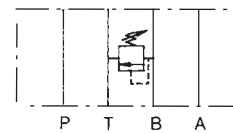
## SYMBOLS



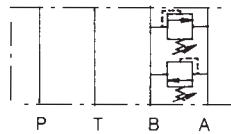
MRF-03P



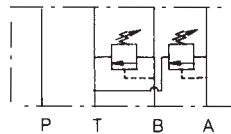
MRF-03A



MRF-03B



MRF-03D



MRF-03C

## HOW TO ORDER

**MRF - 03P - K - 1 - 40**

DESIGN NUMBER

PRESSURE ADJUSTMENT RANGE:

1 : 8-70BAR (120-1000PSI)

2 : 35-140BAR (500-2000PSI)

3 : 70-210BAR (1000-3000PSI)

ADJUSTMENT MODEL :

K : WITH KNOB

NO CODE : WITHOUT KNOB

FUNCTION PORT :

P : P PORT

A : A PORT

B : B PORT

C : A&B PORT VENTING TO TANK

D : A&B PORT CROSS OVER RELIEF

PORT SIZE : 3/8" (D05)

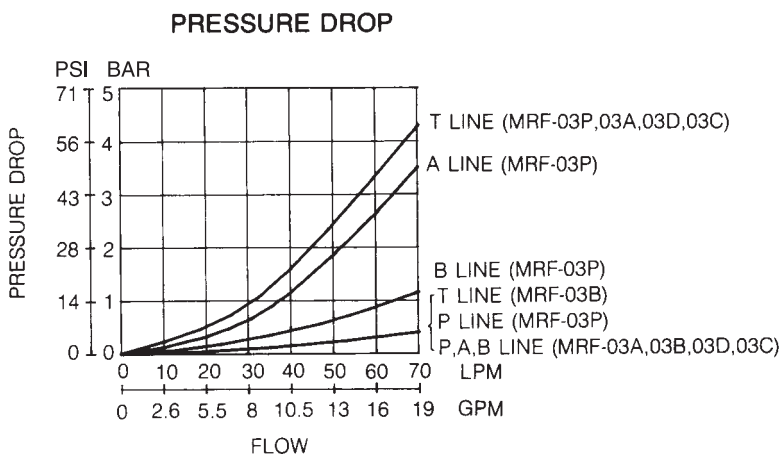
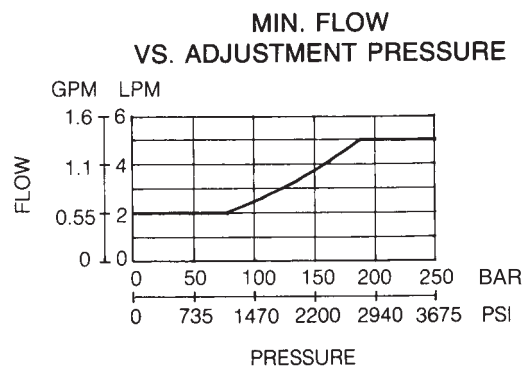
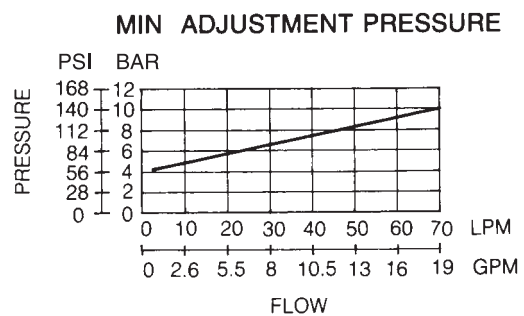
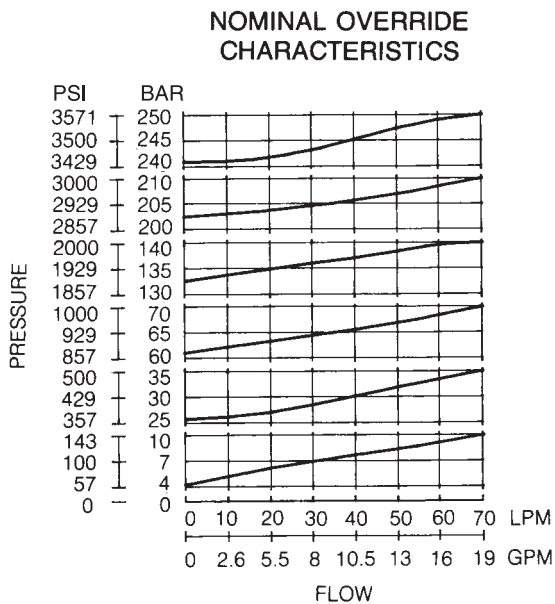
MODULAR RELIEF VALVE

## PERFORMANCE CURVES

### TEST CONDITIONS

Viscosity: 35 cSt (175 SSU)

Temperature: 50°C (122°F)



# MRF-03 SERIES

## INSTALLATION DIMENSIONS

UNIT: mm(inch)  
WEIGHT: 3.3 kgs(7.28 lbs)  
Mounting Surface: ISO 4401-AB-03-4-A

MRF - 03A/B/P - ※ - ※ - 40

