

Flexible Couplings / Bell Housings / Damping



ND Aluminium Series - OMT

- Cast alloy with flexible rubber insert, pre-bored to suit 1:8 taper or SAE shafts and UNEL electric motors.

Model/Parts Required	Pump Shaft	Motor Shaft mm	Frame Size	Rubber Ø mm
ND 2	Grp. 1 Taper	14	71	42
ND 5	Grp. 1 Taper	19	80	62
ND 8	Grp. 1 Taper	24	90	62
ND 11	Grp. 1 Taper	28	100 - 112	62
ND 7	Grp. 2 Taper	19	80	62
ND 10	Grp. 2 Taper	24	90	62
ND 13	Grp. 2 Taper	28	100 - 112	62
ND 14	Grp. 2 Taper	28	100 - 112	82
ND 16	Grp. 2 Taper	38	132	82
ND 43A	Grp. 2 Taper	42	160	103
ND 17	Grp. 3 Taper	38	132	82
ND 43C	Grp. 3 Taper	42	160	103
ND 44C	Grp. 3 Taper	48	180	103
ND 40	Grp. 3 Taper	55	200	103
ND65BG1 + R-62 + ND65H4D11	5/8" Parallel	24	90	62
ND65BG1 + R-62 + ND65H4D22	3/4" Parallel	24	90	62
ND65CG1 + R-62 + ND65H4D22	3/4" Parallel	28	100 - 112	62
ND65BG1 + R-62 + ND65H9C99	7/8" Parallel	24	90	62
ND86AG1 + R-82 + ND86HC27	7/8" Parallel	28	100 - 112	82
ND86BG1 + R-82 + ND86HC27	7/8" Parallel	38	132	82
ND108BG1 + R-103 + ND108H2C98	1 1/4" Parallel	42	180	103
ND108CG1 + R-103 + ND108HC98	1 1/4" Parallel	48	180	103

POL Steel Series - OMT

- Steel couplings with polyamide sleeve, pre-bored or blank coupling halves. Designed to establish a connection between an electric motor and hydraulic pump. Mix and match to get the desired assembly.



OMT3 – 112.8Nm@3000rpm (35.4kW)
Sleeve
POL-3
Motor Half
OMT3060C – blank
OMT3060C36 – 28mm, 100/112 frame
Pump Half
OMT3060C22 – SAE A 3/4"
OMT3060SE07 – SAE A 9T
OMT3060C – blank

OMT4 – 186.4Nm@3000 rpm (58.5kW)
Sleeve
POL-4
Motor Half
OMT4080C – blank (or pump half)
OMT4080C47 – 38mm, 132 frame
Pump Half
OMT4080C22 – SAE A 3/4"
OMT4080C27 – SAE B 7/8"
OMT4080SE10 – SAE B 13T
OMT4080SE11 – SAE B 15T

(continued on next page)

Flexible Couplings / Bell Housings / Damping



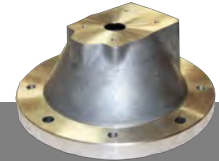
POL Steel Series – OMT (continued)

OMT5 – 269.8Nm@3000rpm (84.5kW)
Sleeve
POL-5
Motor Half
OMT5080C – blank (or pump)
OMT5110C51 – 42mm, 160 frame
OMT5110C54 – 48mm, 180 frame
Pump Half
OMT5060C22 – SAE A 3/4" Parallel
OMT5060C28 – SAE B 7/8" Parallel
OMT5060C40 – SAE C 1 1/4" - short
OMT5060SE04 – SAE C 14T - short
OMT5060SE10 – SAE B 13T - short
OMT5060SE11 – SAE B 15T - short
OMT5080C40 – SAE C 1 1/4" - long
OMT5080SE04 – SAE C 14T - long
OMT5080SE06 – SAE CC 17T
OMT5080SE10 – SAE B 13T

OMT6 – 412.4Nm@3000 rpm (130kW)
Sleeve
POL-6
Motor Half
OMT6080C56 – 55mm, 200 frame
OMT6080C57 – 60mm, 225 frame
OMT6080C58 – 65mm, 250 frame
OMT6110C – blank
OMT6110C56 – 55mm, 200 frame
OMT6080C58 – 65mm, 250 frame
Pump Half
OMT6080C40 – SAE C 1 1/4"
OMT6080SE04 – SAE C 14T
OMT6080SE06 – SAE C 17T
OMT6110C39 – SAE C 1 1/4"
OMT6080SE06 – SAE CC 17T
OMT6110C – blank

Bell Housings – OMT

- Cast alloy, pre-tapped to suit pumps with European style 4 bolt or SAE mounts.



Model	Motor Flange mm	Frame Size	
LS161	160	71	Grp. 1 Euro
LS201	200	80 - 90	Grp. 1 Euro
LS203	200	80 - 90	Grp. 2 Euro
LS250	250	100 - 112	Grp. 1 Euro
LS252	250	100 - 112	Grp. 2 Euro
LS255	250	100 - 112	Grp. 3 Euro
LS300	300	132	Grp. 2 Euro
LS302	300	132	Grp. 3 Euro
LS350	300	160	Grp. 2 Euro
LS352	350	160 - 180	Grp. 3 Euro
LSE401	400	200	Grp. 3 Euro
TH1-825A	200	80 - 90	SAE 'A'
TH15-101A	400	200	SAE 'B'
TH20A-453A	200	80-90	HALDEX 4 bolt
B20Q1A101A	200	80 - 90	SAE 'B'
TH2-825A	250	100 - 112	SAE 'A'
TH2-101A	250	100 - 112	SAE 'B'
TH2-127A	250	100 - 112	SAE 'C'
TH3-825A	300	132	SAE 'A'
TH3-101A	300	132	SAE 'B'
TH3-127A	300	132	SAE 'C'
TH3-101A	300	132	SAE 'B'
TH3-127A	300	132	SAE 'C'
TH4-825A	350	160 - 180	SAE 'A'
TH4-101A	350	160 - 180	SAE 'B'
TH4-127A	350	160 - 180	SAE 'C'
TH4-127C	350	160-180	SAE 'C' 4B

Flexible Couplings / Bell Housings / Damping

Couplings & Bell Housings for Petrol Engines – OMT

- Bell-housings and cast alloy coupling with flexible rubber insert, pre-bored to suit 1:8 taper or SAE pump shafts and appropriate petrol engine output shaft.



Bell Housing	Coupling	To Suit Engine	To Suit Pump
LMH150-GC	252835 + R-42 + 252836	5.5HP Honda	GC Series 4 bolt
LMH151	ND 510	5.5 HP Honda	Grp.1, Taper, Euro
LMH151	ND 511	5.5 HP Honda	Grp.1, 12mm, Euro
LMH401	ND 610	8-13 HP Honda	Grp.1, Taper, Euro
LMH403	ND 613	8-13 HP Honda	Grp.2, Taper, Euro
LB152-825A	ND 710	7-18 HP Kohler	SAE A, 3/4" parallel
LB152-U1P	ND 600	7-18 HP Kohler	Grp.1, Taper, Euro
LB152-2	ND 603	7-18 HP Kohler	Grp.2, Taper, Euro



Bell Housing Adaptor GC Pump – HYSPECS

Bell Housing	To Suit Engine	To Suit Pump
HSADP2	8-13HP Honda	GC Series 4 bolt

Damping Rings for Power Packs – OMT

- Consist of two metal rings moulded into vulcanized rubber. Interposed between the bell housing and the tank cover, they diminish the noise created by the power transmission by approx. 3 - 5 dB. The rubber is mineral oil resistant with a maximum working temperature of 80°C.



Model	Diameter <i>mm</i>	To Suit Electric Motor Frame Size
A-200	200	80 - 90
A-250	250	100 - 112
A-300	300	132
A-350	350	160 - 180